



## Solid Silicone Extrusion / 1004 10W 24V

### Technical Details

Power	10W/M
Voltage	DC24V
CRI	90
Led Qty	480LEDs/M
Length/Reel	5M
Working Temperature	-25-60°C
Storage Temperature	-30-80°C
Voltage Range	23 -25V dc
Reverse Voltage	25V dc

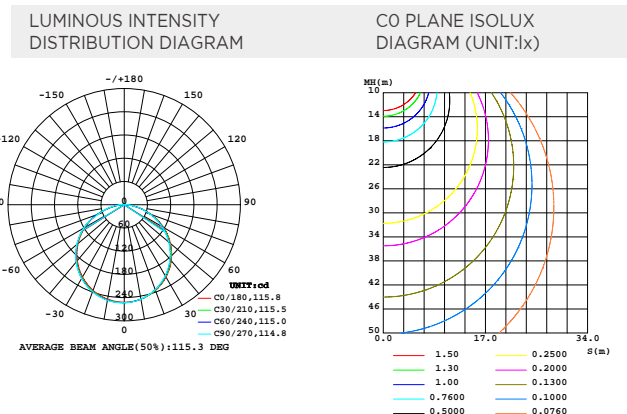
- Seamless and uniform light output, dot free.
- Bendable at horizontal direction.
- IP67 protection.
- Robust housing with high quality silicon, UV proof for true outdoor application.



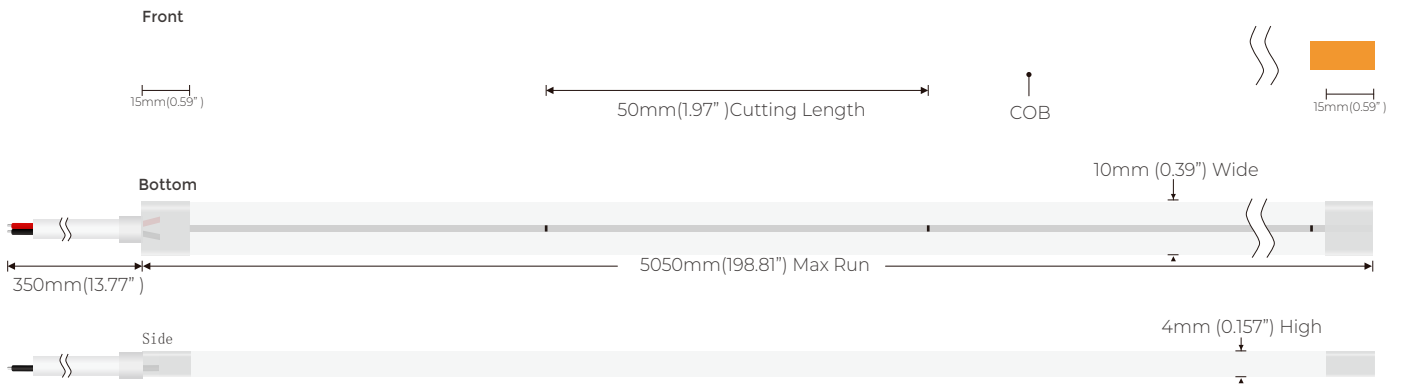
### Lumens Per Meter

Color Temperature	
● 2700K	750lm
● 3000K	780lm
● 4000K	850lm
● 5000K	860lm
● 6000K	860lm
● RED	68,5lm
● Green	880lm
● Blue	95lm

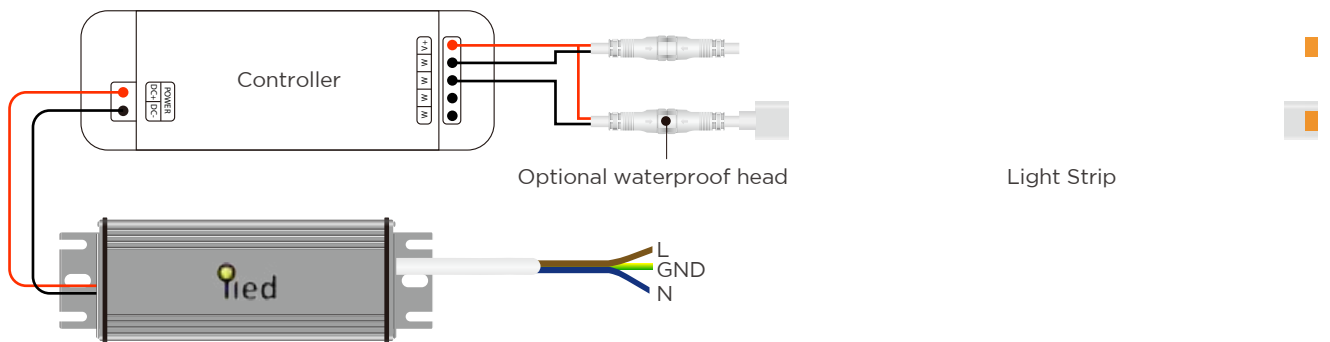
### Light Distribution



## Dimension

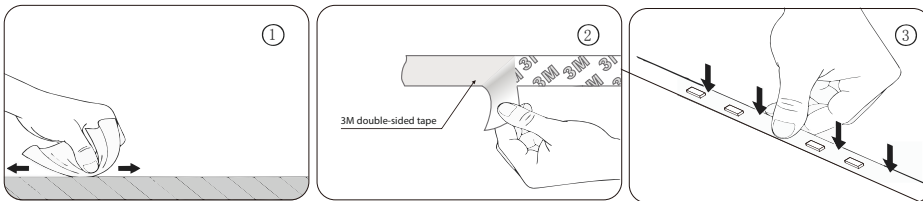


## Power Connection Diagram



## Installation

### ① INSTALL

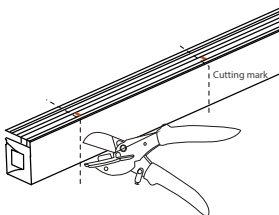


Clean the environment part to be attached with a cloth, as shown in Figure 1, and then tear off the 3M tape on the back of the light belt, and finally stick the light belt on the clean place.

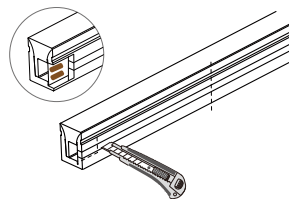
Please refer to the installation manual for details

### Cutting

① Cut the neon to be required length



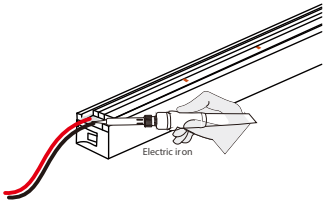
② Cut the side of neon, expose the soldering pad



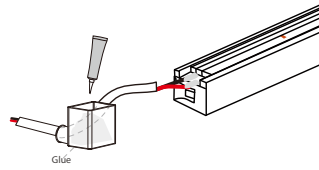
⚠ The minimum cutting unit is based on the cutting mark.

## Soldering

① Solder the cable onto the PCB



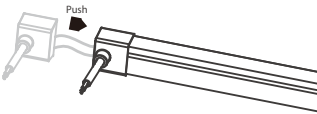
② Put the wire into and inject glue into the end cap



⚠ The amount of glue is about 1/3-1/2 of end cap.

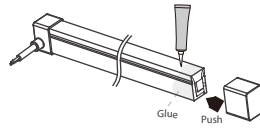
## Intall end cap

① Push the end cap to wrapp end of neon

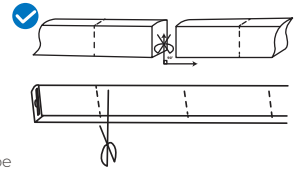


⚠ After the glue is injected, the neon needs to be laid flat for 2 hours to before other process.

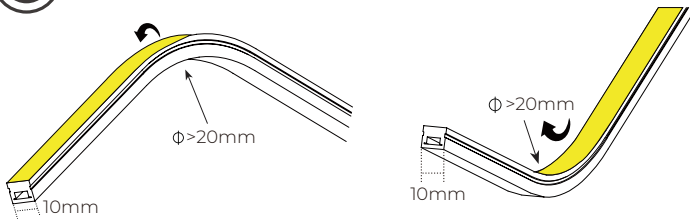
② Apply gel around the tail of neon and install the end cap



⚠ After the glue is injected, the neon needs to be laid flat for 2 hours to before project process. Glue will complete dry after 24hours.



## Top bending series correct bending way.



## PACKING

N.W /CTN(KG)	QTY / CTN(reel)	G.W/CTN(KG)	CTN Size(mm)
0.36	50	21	520x270x560
